

FLAT TOP

UTE LIDS CANOPIES

SAIC T60 AUTOMATIC HARD LID INSTALLATION



Remove sports bars and place on cushioned surface



Open fittings sleeve



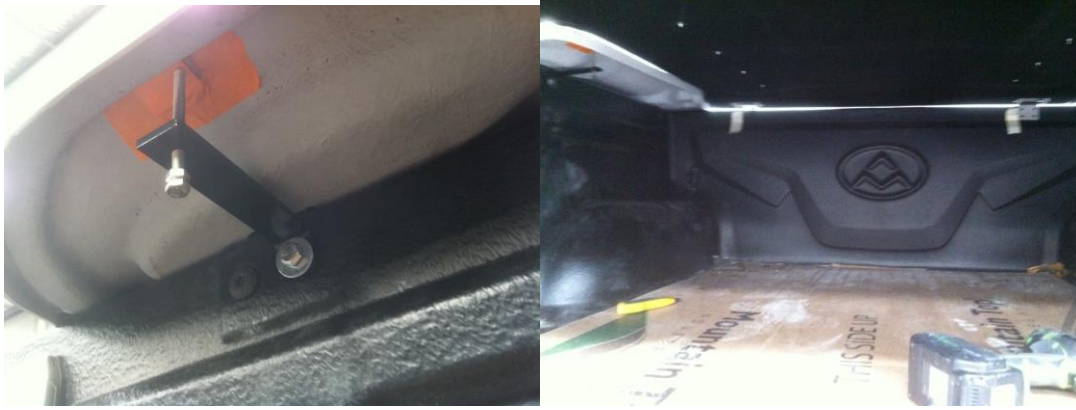
Sports bar brackets



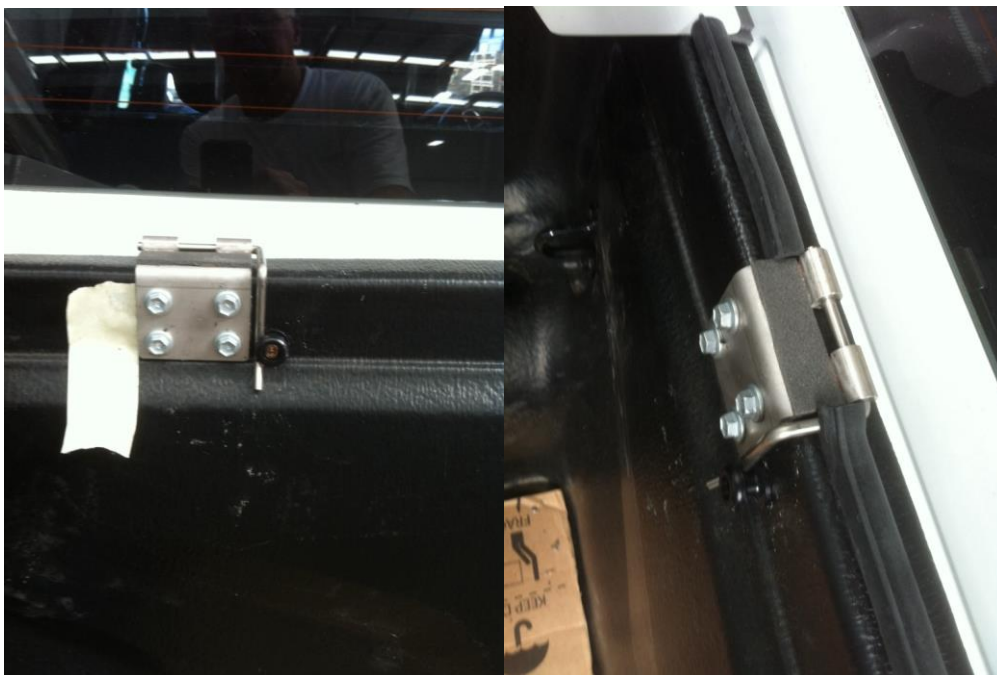
Remount feet with spacer washers under infil moulding



Install foam seal up front across tubliner



Replace sports bars and mount support bracket



Mount hinges on lid , put on vehicle, centre and mark female hinge position . mount hinges with self tapping bolts thru liner.



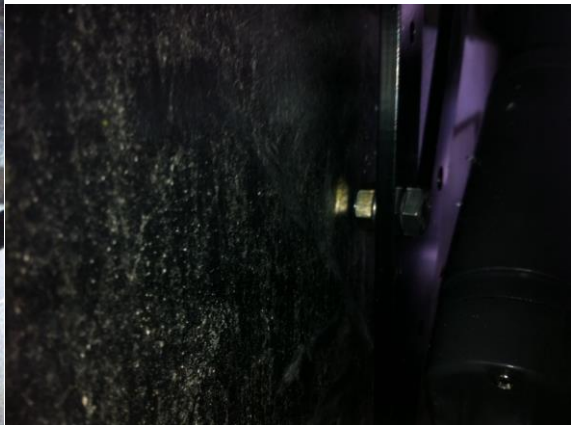
Remove male lid hinge and assemble (lubricate pins) replace lid and re attach .



Attach pre assembled closed strut to lid and lay back to mount on tub edge



Attach support bracket and drill mount bottom support bolt . attach thru tub with nyloc knut



Insert stabiliser bolt and tighten



Feed wire thru tub use grommet to protect wire thru the hole feed wire thru chassis on drivers side
With a bit plastic blue tongue attached to wire come out near the underside of the drivers seat.





Come up attach grommet and under sil cover –follow harness to kick panel



Remove rubber door seal and kick panel , attach control module to inside of panel feed power wire across underneath Intrument panel and go thru the firewall to the battery



Mount isolater swich on kick panel and leave 5A safety fuse accessible . attach to battery with separate 10 Amp fuse



Pierce grommet and feed wire thru fire wall



Use conduit on wire anywhere under the bonnet , use cable ties to secure.

